



DHL EXPRESS

# SERVICE & RATE GUIDE 2024

## GERMANY

### GET STARTED

[Connecting Your World](#)

[Welcome](#)

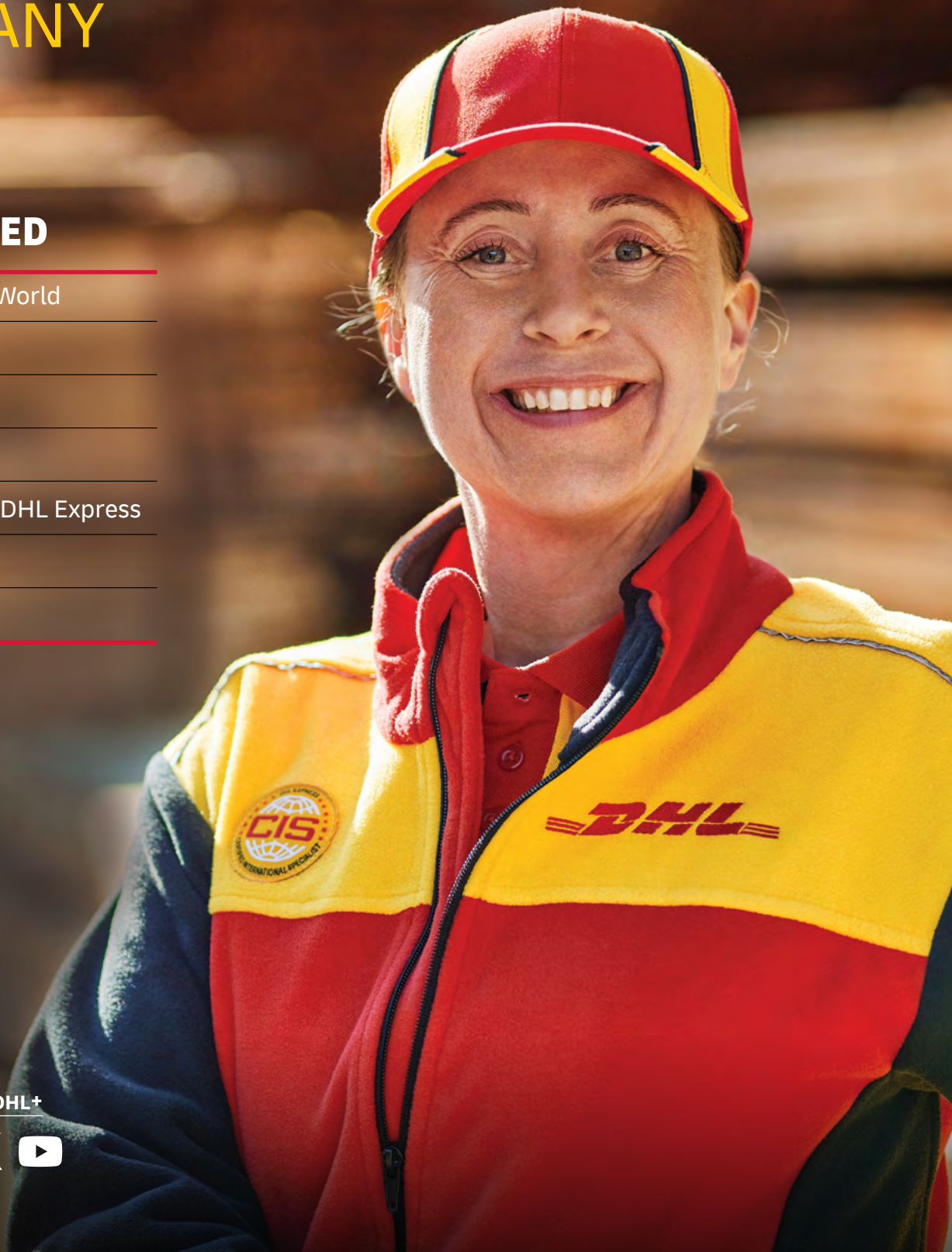
[Sustainability](#)

[Service Offering](#)

[How to Ship with DHL Express](#)

[Digitalization](#)

[Zones and Rates](#)



Ready to ship?  
Get a quote from [MyDHL+](#)

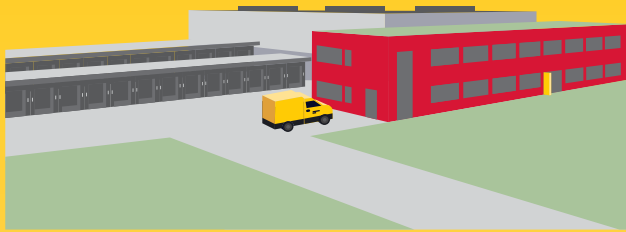


# CONNECTING YOUR WORLD

**220**  
countries and  
territories served



**500+**  
airports served  
worldwide



**3,500**  
facilities

**300+**  
aircraft

**2,400+**  
flights per day



**34,500**  
vehicles



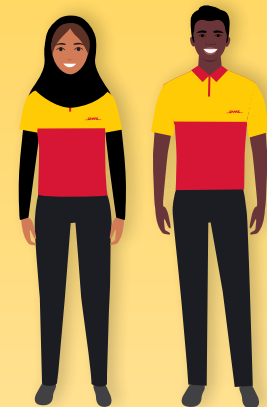
**148,000**  
Service Points

By the year 2050, DHL Group aims to achieve net zero emissions logistics

MISSION 2050  
**ZERO EMISSIONS**  
GOGREEN

**296**  
million

Time Definite shipments  
per year



**120,000**  
employees



**415**  
TAPA\* certifications



Figures are global and are approximate as of the end of 2022  
\*TAPA = Transported Asset Protection Association

# WELCOME

Here is our DHL Express Service and Rate Guide for 2024. If you are reading this, it means you have a personal or business need to move something, from somewhere, to somewhere and you want it done quickly, securely and reliably. We are here to help you!

DHL Express is the market leader in Time Definite International (TDI) shipping and the most international company in the world. We move over 1 million shipments every working day, from point A to point B in 220 countries and territories, as quickly, securely and reliably as possible and with as much transparency as possible. Over 2.5 million customers around the world put their trust in us, and our team of 120,000+ Certified International Specialists strive to exceed their expectations on every single shipment.

Global logistics appears to be finally seeing the end of COVID-driven disruptions but yet is not completely back to the 'normal' of the previous time period. Overall, the global macroeconomic situation has started to stabilize although uncertainty remains. Aviation networks remain volatile in many parts of the world and the crisis in Europe continues to add complexity to global logistics. In the face of these and other challenges, we have continued to invest in safeguarding the resilience of our global network, which enables us to provide secure and reliable supply chain solutions to support our customers.

For example, in Germany we are currently implementing our €104 million facility at Munich Airport, which is scheduled to be operational in 2024. In addition, we are constantly expanding our electric vehicle fleet.

**Sustainability** continues to grow in focus in all logistics conversations and I invite you to learn how our [GoGreen Plus](#) service, introduced in 2023, and our leveraging of Sustainable

Aviation Fuel (SAF) can directly help make your products more environmentally friendly – a growing criterion in the purchase decision process of both individual consumers and businesses.

**Digitalization** retains its laser focus at DHL and we have brought to market a slew of tools to support our customers, in particular small businesses. For example, the new [My Global Trade Services tool](#) aims to reduce customs complexity and improve getting clearance 'first time right!'. The [DHL Express Commerce tool](#) can help small businesses fast-forward taking their online sales channels international. Small business owners, let us help support your growth by enabling you to Save More as you Ship More! You could benefit from our **Dynamic Discounting** commercial options. Interested? [Let's connect!](#)

In conclusion, please use this guide to learn how DHL Express products, services and tools can meet your logistics needs. **Thank you** for trusting us to be your Logistics Partner of Choice. Tell us how we can support your growth: reach out to us on [MyDHL+](#) or by calling Customer Service on 0228 902 435-10.

Sincerely,

Mustafa Tonguç  
Country Manager  
DHL Express Germany



Connecting Your World
► Sustainability
Service Offering
How to Ship with DHL Express
Digitalization
Zones and Rates

# SUSTAINABILITY

Everything we do is to serve one purpose: **Connecting people, improving lives.** To fulfill this purpose, we need to make every dimension of our business sustainable. Our Sustainability Roadmap sets out our ambitions in three focus areas: Environment, Social and Governance (ESG). Find case studies and more details [here](#).

## OUR TARGETS FOR 2030

**<29 million**

Reduction in our greenhouse gas emissions to under 29 million tonnes

**€7 billion**

Investment of €7 billion in green technologies

**SBTi**


Commitment to SBTi (Science-Based Targets initiatives)

**30%**

SAF blending of 30% for all air transport

## CLEAN OPERATIONS FOR CLIMATE PROTECTION

### Leader in sustainable aviation

 Our GoGreen Plus service allows you to embrace green logistics by insetting, or reducing, the CO2 within your own supply chain. We do this by using Sustainable Aviation Fuel (SAF). And that is not only good for the environment, it can benefit you by helping you to report your CO2 emissions. Here is how to get on board:

- With the GoGreen Plus **basic contract**, 30% CO2 reduction (insetting) is applied to all your express shipments via air.
- In **MyDHL+**, you can opt for GoGreen Plus and choose which shipments to invest in with SAF.
- Alternatively, choose a **customized offer** for even more CO2 reduction.

Our GoGreen Plus service is made possible following DHL Express' landmark collaborations with bp and Neste to supply DHL Express with SAF, which is expected to save some **two million tons** of carbon dioxide emissions over the aviation fuel cycle.

### Green last-mile and line-haul

Electrify **60%** of last-mile delivery vehicles and increase share of sustainable fuels in line haul to more than **30%** by 2030.

### Carbon neutral buildings

Design **100%** of all new buildings to be carbon neutral.

### Green product portfolio

Our GoGreen Plus service allows customers shipping TDI to inset their CO2 air emissions by up to **100%**.

Through collaboration, we can make our supply chains more sustainable. Read more about the Era of Sustainable Logistics.



## GREAT COMPANY TO WORK FOR ALL

- Attract and retain the best talent
- Strong 'Safety First' culture
- Diverse and inclusive workplace

## HIGHLY TRUSTED COMPANY

- Compliance as an integral part of daily business
- Effective governance set-up across our organization
- Like-minded and compliant suppliers and partners



# SERVICE OFFERING

## Export Services

## Import Services

## Domestic Services

## Enabling Your Growth

## Optional Services

## Surcharges

## Customs Services

Our core services are Time Definite International (TDI) and offer you secure door-to-door delivery of goods and documents to and from virtually every country and territory. Whether you need your shipments delivered at the start, middle or end of a business day, our services offer full track-and-trace visibility so you always know where your shipments are.

## EXPORT SERVICES

### DHL Express Worldwide

Our most popular product, DHL Express Worldwide, offers an end of business day delivery service around the world for pieces up to 70kg and shipments up to 3,000kg.

We deliver reliably and quickly to more global destinations across a single integrated network than any other express delivery company.

### DHL Express 12:00

With DHL Express 12:00 you will receive your shipments before 12 noon on the next possible business day. DHL Express 12:00 offers a money-back guarantee\* and allows for pieces up to 70kg and shipments up to 300kg.

### DHL Express 9:00 (10:30 to the USA)

Our premium time-definite service offers a delivery before 9:00 (10:30 to the USA) on lanes that guarantee either a next or second business day delivery. DHL Express 9:00 is offered to the majority of business centers in Europe, the Middle East, Africa, Asia and the Americas. DHL Express 9:00 features a money-back guarantee\* and is suitable for pieces up to 30kg and shipments up to 300kg.

### DHL Economy Select

DHL Economy Select is the ideal choice for less urgent shipments via road transportation, with door-to-door delivery throughout Europe within a defined number of business days.

### Our international services at a glance

	DHL Express Worldwide	DHL Express 12:00	DHL Express 9:00 (10:30 to the USA)	DHL Economy Select
<b>Service description</b>	Delivery by the end of the next possible business day	Delivery before 12 noon on the next possible business day	Delivery before 9:00 (10:30 to the USA) on the next possible business day	Delivery within a defined number of business days
<b>Money-back guarantee</b>	No	Yes*	Yes*	No
<b>Countries and territories covered</b>	More than 220	86	38	29
<b>Delivery attempts</b>	2	2	2	2
<b>Maximum piece weight (not on pallet)</b>	70kg	70kg	30kg	70kg
<b>Maximum pieces per shipment</b>	–	10	10	–
<b>Maximum piece dimensions (L x W x H)**</b>	120 x 80 x 80cm	120 x 80 x 80cm	120 x 80 x 80cm	120 x 80 x 80cm
<b>Maximum pallet weight</b>	1,000kg	Pallets not accepted	Pallets not accepted	1,000kg
<b>Maximum shipment weight</b>	3,000kg	300kg	300kg	1,000kg
<b>Maximum pallet dimensions (L x W x H)</b>	300 x 200 x 160cm	Pallets not accepted	Pallets not accepted	300 x 200 x 180cm

\*Additional terms and conditions apply – see [dhl.de/express/gtc](https://www.dhl.de/express/gtc) for details.

\*\*A shipment is deemed unacceptable if its packaging is absent or inadequate, or if transporting the shipment would present risks of damaging equipment, other packages or injuring personnel. DHL Express reserves the right to either not accept or return the shipment to the shipper. These network restrictions are subject to change with 30 days' notice.

# SERVICE OFFERING

---

 Connecting Your World
 

---

 Sustainability
 

---

 ▶ Service Offering
 

---

 How to Ship with DHL Express
 

---

 Digitalization
 

---

 Zones and Rates
 

---

 Export  
Services

 Import  
Services

 Domestic  
Services

 Enabling Your  
Growth

 Optional  
Services

Surcharges

 Customs  
Services

## IMPORT SERVICES

With the DHL Express Worldwide Import product, you can import shipments from over 220 countries and territories in the world. This is more than any other express delivery company can offer. What's more, customers in, for example, the USA can order an import from China not just to the USA, but to any other destinations as well – we call this a Third Country shipment.

There is no need for local brokers or forwarders to get involved in any part of the process. You are in full control, and able to manage all aspects of your imports in a very simple way.

If you need a faster delivery, our DHL Express 12:00 and DHL Express 9:00 services are available for import as well as our DHL Economy Select Import service for less urgent shipments throughout Europe. You can order an import from another country, to be delivered to your country or any other destination, by using our dedicated electronic shipping solution for imports. You will have one account number, one invoice in a single currency and a fixed price that means you know exactly what you will pay.

## DOMESTIC SERVICES

When you have a deadline, you can ship documents or goods within Germany, with our Time Definite Domestic products. These offer delivery time guarantees of 12:00, 10:30 or 9:00 and, if you wish, we can collect your shipment from you within 90 minutes of receiving your order.

- Collection of your documents or goods
- Delivery of express shipments possible in more than 13,000 service points
- Up to two delivery attempts
- Can be stored for up to seven days
- Money back guarantee for time definite options 9:00, 10:30 and 12:00
- Delivery to DHL Packstations possible
- Delivery also available to private addresses and remote areas (e.g. German islands)

## DHL EXPRESS ENVELOPE

Our DHL Express Envelope service provides door-to-door international delivery of lightweight document shipments by the end of the next possible business day. It also offers you carbon reduced shipping at no extra charge.

- Up to 300g
- Global coverage
- Document shipments only
- Packaging envelope included
- GoGreen Plus carbon-reduced service included



## DHL SAME DAY & SPECIAL SERVICES

With DHL Same Day & Special Services, we offer customized solutions for high value or critical domestic and international shipments to over 220 countries and territories. We pick up a shipment of almost any size or weight and deliver it to its destination within hours.



# SERVICE OFFERING

Export  
Services

Import  
Services

Domestic  
Services

Enabling Your  
Growth

Optional  
Services

Surcharges

Customs  
Services

## GLOBAL TRADE AND YOU

A series of crises has put international trade at the center of the debate about economic growth and resilience. What are the current prospects for globalization and trade? Is there cause for concern? Is trade still an attractive source of growth? We deep dived into the data and conducted a thorough, fact-based analysis – and the results might just surprise you. In partnership with NYU Stern's Center for the Future of Management and its DHL Initiative on Globalization, the 'DHL Trade Growth Atlas' examines global trade growth trends and the trade patterns of 173 countries worldwide that combined make up more than 99% of world trade, GDP and population. Despite recent shocks and worsening macroeconomic conditions in much of the world, the study overall gives an upbeat assessment of the prospects for future trade growth.

We know the value of understanding the long-term global trade landscape for navigating short-term shifts in economic and trade growth. We help our customers make sense of what this means for their business to maximize the enormous potential of globalization and international trade.

**Trade growth expanding** across a broader range of countries

**New poles emerging:** world trade center of gravity moving south

**Shift in mix of products** traded by advanced vs. emerging economies



## POWERING UP THE POTENTIAL OF INTERNATIONAL E-COMMERCE

### Discover and grow

Visit [dhl.com/discover](https://www.dhl.com/discover) to learn more about how DHL helps e-commerce companies ranging from start-ups to large enterprises, advising them on how to grow internationally. Our e-commerce focussed country guides, white papers such as 'The Ultimate B2B E-Commerce Guide', customer and trend research and market intelligence tools can enable you to better understand your customers and their shipping requirements to take the next step in your e-commerce journey.

### International e-commerce

We help our customers go global with ease and speed to maximize the enormous potential of international e-commerce. DHL supports our customers' international growth with:

- Global reach
- Express delivery options
- Flexible delivery options for receivers (see 'On Demand Delivery')
- Duty billing options and customs expertise
- Consultative advice for our customers on how to increase sales and grow cross-border

### Fast, flexible and easy

Consumers expect everything 'on demand' – anytime, anywhere. DHL shipping options give customers a distinct competitive edge: over 90% of online consumers look at the available delivery options before going to the checkout, and their decision is influenced by delivery speed, flexibility and ease.



# SERVICE OFFERING

---

 Connecting Your World
 

---

 Sustainability
 

---

 ► Service Offering
 

---

 How to Ship with DHL Express
 

---

 Digitalization
 

---

 Zones and Rates
 

---

 Export  
Services

 Import  
Services

 Domestic  
Services

 Enabling Your  
Growth

 Optional  
Services

Surcharges

 Customs  
Services

## OPTIONAL SERVICES

[View charges](#)

DHL Express offers a wide range of optional services – from non-standard deliveries and billing options to climate friendly shipping.

### GoGreen Plus

When selected, DHL Express will reduce (inset) CO2 emissions from air transport through the purchase of Sustainable Aviation Fuel (SAF). SAF can reduce lifecycle carbon emissions by up to 80% compared to traditional jet fuel. GoGreen Plus – Carbon Reduced service, supports Scope 3 emission reductions in alignment with the Science Based Target initiative. The process is audited annually by SGS (Société Générale de Surveillance) to ensure compliance with regulations and standards. Alternative reduction levels and CO2 emission reports are available on contractual basis only.

### Dedicated Pickup

If your business needs a dedicated vehicle to collect unusual shipments, or a pickup outside normal business hours, we can arrange this for you.

### Dedicated Delivery

On customer request, an immediate or non-routine, once-only delivery of a shipment within a normal working day or a holiday that involves a specific vehicle such as tail lift truck or more than one courier.

### Saturday Pickup

In countries where Saturday is not a normal working day, DHL Express can arrange an ad-hoc pickup of smaller shipments up to 30kg. The service is available at selected postal locations only.

### Saturday Delivery

We offer Saturday delivery services to key cities in more than 70 countries.

### Receiver Paid

This service allows non-account Customers to arrange and pre-pay an import shipment door-to-door. MyDHL+ will guide the importer through the entire shipping process from the pickup at origin till delivery at destination. The service is Door-to-Door and thus equal to import service with all its available shipping options. Import duty and tax is collected as per duties and taxes unpaid (DTU) standard process whilst the transport service is pre-paid usually via Credit Card.

### Shipment Insurance

We recommend this comprehensive protection for your valuable or personal shipments, giving you peace of mind in the unlikely event of physical damage or loss. The service is subject to specific limitations and exclusions as described in our [Terms and Conditions](#).

### Extended Liability

If you are sending valuable documents such as passports, visa applications or regulatory certificates you can extend coverage and compensation beyond the DHL Express standard liability described in our [Terms and Conditions](#). In the event of full or partial loss to a document shipment, a fixed compensation will be paid regardless of the replacement cost of the document.

### Packaging Supplies

We provide packaging supplies for our customers. Charges apply for plastic flyers and will in time apply to other packaging supplies.

## DUTY BILLING SERVICES

### Duty Tax Paid

DHL Express can arrange for the shipper or a third party to be billed for any duties and taxes payable at destination, rather than the receiver of the shipment being billed. Charges apply whenever duties, taxes or other regulatory fees occur, and shipper has requested that those are to be billed outside of the destination country.

### Duty Tax Processing:

#### Account Customers

DHL Express will accelerate the customs clearance process making prompt payment of duty and tax charges relating to a shipment, while the receiver defers payment until an agreed date.

### Duty Tax Processing:

#### Non-Account Customers

This default service covers any import of a non-document shipment for which DHL Express has used its own credit line with Customs to advance or guarantee the payment of duties, taxes or regulatory charges on behalf of importers and consumers with whom DHL Express has no contract.



# SERVICE OFFERING

Export  
Services

Import  
Services

Domestic  
Services

Enabling Your  
Growth

Optional  
Services

Surcharges

Customs  
Services

## ➔ OPTIONAL SERVICES

[View charges](#)

### Hold for Collection

On shipper request, a shipment is held at the default DHL Express delivery facility at destination for consignee collection, rather than attempt a delivery at the receiver's address. The service is booked through Customer Service or supporting shipping tools. The destination will notify the receiver when and at which facility the shipment is ready to collect. A consignee cell phone number is mandatory.

### Residential Address

Customers shipping to a home or private residence can activate specific delivery options by designating the delivery address as residential. For such shipments, DHL Express will proactively notify the receiver via email or SMS about the shipment's progress. Receivers can then select the most suitable delivery option via [On Demand Delivery](#).

### Direct Signature

If you are sending sensitive documents or high value contents you can request DHL Express to obtain a direct signature from the consignee or a representative at the delivery address. DHL Express will ensure your shipment is not re-directed, or delivered at an alternative address.

### Adult Signature

Delivery of a shipment to an adult. DHL Express will obtain a delivery signature from an adult at the stipulated delivery address.

### No Signature Required

On receiver request, DHL Express is authorized to leave the shipment in a designated place without proof of delivery signature.

### Printed Invoice

This service is for customers who require a paper invoice where e-billing is the agreed standard. This service provides flexibility for a different invoicing method than what is already agreed.

### Change of Billing

This applies when a customer requests a change of defined billing information on an already issued invoice, which will result in a reissuing of the invoice and, in case of an account change, crediting of the old account and debiting of the new.

### Neutral Delivery

This service allows for the delivery of non-document shipments, without any value of the product being shared or exposed to the receiver, since the commercial invoice is removed prior to delivery.



For a full list of optional services, please visit [dhl.de/express/products-services](https://dhl.de/express/products-services).

# SERVICE OFFERING

---

 Connecting Your World
 

---

 Sustainability
 

---

 ► Service Offering
 

---

 How to Ship with DHL Express
 

---

 Digitalization
 

---

 Zones and Rates
 

---

 Export  
Services

 Import  
Services

 Domestic  
Services

 Enabling Your  
Growth

 Optional  
Services

**Surcharges**

 Customs  
Services

## SURCHARGES

[View charges](#)

In order to maintain a consistently high level of service, in specific circumstances DHL Express levies a surcharge for exceptional activities, ensuring that these surcharges are fair for all of our customers.

### Fuel Surcharge

The fuel surcharge for International Time Definite services will be based on the daily average spot prices for US Gulf Coast (USGC) kerosene-type jet fuel, as reported by the U.S. Department of Energy between 3rd week release of prior month to 3rd week release of actual month. For example, the daily average price for fuel from 18th April to 15th May is used to determine the applicable surcharge in June.

The fuel surcharge for Domestic and Day Definite services will be based on the most suitable national measure of diesel fuel prices. The surcharge is linked to the consumer price in local currency of diesel fuel inclusive of duties and taxes and published [here](#). Within Europe this is measured by the European Commission Directorate General for Energy and Transport and published in the Oil Bulletin. The fuel surcharge applies to transportation charges on all services and to the following surcharges (where applicable): Saturday Delivery, Saturday Pickup, Elevated Risk, Demand Surcharge, Emergency Situation, Remote Area, Dedicated Pickup, Dedicated Delivery, Residential Address, Overweight Piece, Oversize Piece and Non-Stackable Pallet.

DHL Express reserves the right to change the fuel surcharge index and table with or without notice. Both the amount and duration of the surcharge will be determined at DHL Express' sole discretion.

### Remote Area

This surcharge applies when a shipment is collected from or delivered to a location that is distant or difficult to serve. Find out whether this applies to your destination at [dhl.de/express/surcharges](https://www.dhl.de/express/surcharges).

### Overweight Piece

A fixed surcharge is applied to every piece, including a pallet that exceeds a scale or volumetric weight of 70kg.

### Oversize Piece

This fixed surcharge applies to every piece, including a pallet, with a single dimension in excess of 120cm. Does not apply to pieces already subject to Overweight Piece surcharge.

### Non-Stackable Pallet

This fixed surcharge is applied to every pallet within a shipment that cannot be stacked, either on request by the shipper, or because of its shape, content or packaging. This surcharge does not apply to pieces below 30kg.

### Demand Surcharge

One or more Demand Surcharges will apply to shipments during a period of high demand. A period of high demand is to be determined by DHL Express at its own discretion but may include a time of high demand for shipping services or a period with high operational cost. Details regarding the application of Demand Surcharges are set forth at [dhl.de/express/surcharges](https://www.dhl.de/express/surcharges) and will be subject to change upon prior notice. Demand Surcharges apply cumulatively if a shipment and/or individual pieces meet more than one of the specified criteria. Demand Surcharges apply in addition to the rates and any other applicable charges.

### Emergency Situation

A temporary surcharge, which allows us to cover operating cost increases due to an emergency situation out of DHL Express' control. Change in market dynamics and air capacity availability is reflected through regular price adjustments. The charge will be applied pro rata based on the chargeable weight (invoiced weight) of a shipment.

### Excepted Quantities

This fixed surcharge is applied when the handling and transportation of shipments involves substances and commodities that are in Excepted Quantities in compliance with IATA Dangerous Goods Regulations. Contractual agreement required.

### Dry Ice

A surcharge is applied when the transportation of shipments involves handling Dry Ice UN1845 as a freezing agent for non-dangerous goods such as diagnostic specimens. Contractual agreement required.

# SERVICE OFFERING

[Connecting Your World](#)
[Sustainability](#)
[▶ Service Offering](#)
[How to Ship with DHL Express](#)
[Digitalization](#)
[Zones and Rates](#)
[Export Services](#)
[Import Services](#)
[Domestic Services](#)
[Enabling Your Growth](#)
[Optional Services](#)
[Surcharges](#)
[Customs Services](#)

## ➔ SURCHARGES

[View charges](#)

### Biological Substance UN3373

Shipments containing Biological Substances Category B (UN3373) or genetically modified organisms as per UN3245 are only accepted in combination with DHL Medical Express. Contractual agreement required.

### Lithium Batteries Section II

#### Shipping Lithium Batteries *with* equipment

A service charge will be assessed on Lithium-Ion and Lithium-Metal batteries **with** equipment. Packaging must be compliant with the appropriate IATA Packing Instruction (PI): 966 for Lithium-Ion and 969 for Lithium-Metal, Section II respectively. Accepted from approved shippers only.

#### Shipping Lithium Batteries *in* equipment

Shipments containing Lithium-Ion or Lithium-Metal batteries **in** equipment are accepted only in compliance with the appropriate IATA Packing Instruction (PI): 967 for Lithium-Ion and 970 for Lithium-Metal, Section II respectively.

DHL Express **will not accept** any shipment that is known or suspected to contain defective or damaged batteries.

### Full Dangerous Goods

A surcharge is applied per shipment when the transportation of shipments involves handling substances and commodities classified as fully regulated in accordance with the IATA Dangerous Goods Regulations. Contractual agreement required.

### Consumer Goods ID8000

A surcharge is applied for shipments containing consumer goods such as perfumes, aftershaves, aerosols, nail varnish and prescription medicines as covered by the IATA ID8000 section and packed in a form intended for retail sale and shipped to private individuals (B2C). Contractual agreement required.

### Limited Quantities

A surcharge is applied per shipment when the ground handling and transportation of shipments involves substances and commodities that are in Limited Quantities. In compliance with ADR regulations and which are restricted from air transportation. Such dangerous goods are restricted to no more than 30kg per piece and are accepted from approved Shippers only. Contractual agreement required.

### Address Correction

This fixed surcharge is applied to any shipment that has an incorrect delivery address at the time of pickup and the delivery cannot be fulfilled after making efforts at the destination to determine the correct address.

### Data Entry

A surcharge applies if the shipping label is not correctly completed or has not been produced electronically according to DHL Express standards and therefore requires manual data entry by DHL Express.

### Security Charges

Additional surcharges may apply when shipping to or importing from a destination country where DHL Express is operating at elevated risk due to continuous state of war, civil unrest, or continuous threats from terrorism (**Elevated Risk**), or when shipping to or importing from a destination country that is subject to trade restrictions imposed by the UN Security Council or by national legislation such as the European Union or the US Office of Foreign Assets Control (OFAC) (**Restricted Destination**).

### Toll Surcharge

DHL Express applies a surcharge per kg for all domestic shipments moving on German motorways, federal trunk roads and other urban road networks subject to toll.



# SERVICE OFFERING

---

[Connecting Your World](#)


---

[Sustainability](#)


---

[▶ Service Offering](#)


---

[How to Ship with DHL Express](#)


---

[Digitalization](#)


---

[Zones and Rates](#)


---

[Export Services](#)
[Import Services](#)
[Domestic Services](#)
[Enabling Your Growth](#)
[Optional Services](#)
[Surcharges](#)
[Customs Services](#)


---

## CUSTOMS SERVICES

[View charges](#)

Navigating the customs landscape is made easier by DHL Express' extensive knowledge and experience of both standard and non-routine customs-clearance processes. Get answers to many of your questions with our new online tool, [My Global Trade Services](#) tool, which will help you expand across borders – and concentrate on your core business.

### Non-Routine Entry

Applies when shipments are subject to non-routine clearance procedures, due to their value, weight and/or commodity as defined by destination Customs Authorities. May also apply in selected countries where DHL Express is legally obliged to outsource formal clearance entries to a licensed third party broker.

### Clearance Processing

Applies in selected countries where additional cost is incurred for importing shipments in alignment with government agency requirements.

### Permits and Licenses

To accelerate import of selected controlled commodities, such as medical devices, pharmaceuticals, computer monitors, laser CD players, cosmetics, eyeglasses, food and food products, DHL Express is required to file specific information in order to obtain the required import permits or licenses.

### Bonded Storage

Storage charges apply when the shipment cannot be released by customs due to inaccurate or missing paperwork. Charges take effect three calendar days after the freight arrival date or broker notification, whichever is later. The charge applies to the duty and taxes payer.

### Multiline Entry

Charges apply when more than 6 lines are recorded on the customs clearance, for example with different commodities or different countries of manufacture.

### Broker Notification/Release to Broker

Involves either the provision of the data or the provision of the goods and documents to the entity making the customs declaration or the forwarder, for the purpose of customs clearance.

### Other Government Agency

Completion of veterinary, health and/or phytosanitary controls at the first point of entry in a country or a customs union. Goods such as foods, animal products, plants, seeds and pharmaceuticals, although accepted for transportation by DHL Express, require by law a health, veterinary and/or phytosanitary control, sometimes including an original regulatory certificate or permit issued by the competent authority in the origin/manufacturing country.

### Bonded Transit

Creation of T1 shipping procedures for duty unpaid forwarding under customs supervision to the receiver. Preparation of customs documents (e.g. T1) in the country of departure, in order to allow a shipment to be transported under customs supervision from a free trade zone/customs warehouse.

### Export Declaration

Applies in countries where an export declaration is required for shipments containing controlled commodities or exceeding a certain value or a certain weight. In Germany, an export declaration is mandatory for shipments with a shipment value higher than €1,000. DHL Express declares a customer's dutiable consignment at customs, using the two-stage export procedure to create the export accompanying document including 5 line items.

### Customs Physical Intervention

A surcharge applies for shipments being intercepted for physical examination by customs authorities. Arrangements for inspections may also include full or partial unloading of a vehicle, the specific marking of prototypes, mutilation of samples or the examination of shipment content.

### Post-Clearance Modification

DHL Express can modify the value, commodity, country of origin, or terms of trade information after the import clearance process for goods, to correct or elaborate on what was submitted previously to Customs. Modifications are also necessary when import details such as the VAT number are incorrect on the declaration.

# HOW TO SHIP WITH DHL EXPRESS

Preparing Your Shipment

Packaging Your Shipment

Paying for Your Shipment

## PREPARING YOUR SHIPMENT: AS EASY AS 1-2-3

### 1 Shipment weight

- Please weigh and measure your shipment.
- If you are sending a large but lightweight shipment, where its volumetric (dimensional) weight exceeds its actual weight, the cost of the shipment is calculated on the space your consignment takes up on the aircraft. This is a standard IATA method. To calculate the volumetric weight of your shipment, simply multiply the length by height by width in centimeters, then divide the total sum by 5,000 for each piece in the shipment.
- Any piece in the shipment may be re-weighed and/or re-measured by DHL Express to confirm this calculation.

### 2 Documentation required: waybill

- All shipments sent with DHL Express need to have a fully completed DHL Express waybill or label securely attached to each piece. This will enable the successful movement of your shipment through the DHL Express network. Each waybill or label is individually numbered to allow you to track your shipment from collection through to delivery.
- Your shipment may also need to be accompanied by customs documentation, such as a commercial or proforma invoice, as well as additional paperwork depending on the contents and value of the shipment and the country you are sending to.

### 3 Documentation required: invoice

- An electronic customs invoice (commercial or proforma invoice) is required when sending non-document shipments to countries and territories outside your origin country or customs union. This is essentially a declaration containing all the details of a transaction and is used by customs authorities to assess if duties or taxes are payable.
- A commercial invoice is used when goods are part of a commercial transaction or intended for resale.
- A proforma invoice is used when sending goods of no commercial value (for example, when sending samples).
- Whenever possible, customs invoices should only be sent digitally to DHL Express. In addition, the invoice data at the individual item level is an elementary part of the shipment preparation (description of the goods, weight, price, country of origin, number, units and value of the goods) and must be provided digitally.
- If possible, customs invoices should only be transmitted digitally to DHL Express. In addition, the invoice data at line item level is an elementary part of shipment preparation (description of goods, weight, price, country of origin, number, units, value of goods) and must be provided digitally.



Connecting Your World
Sustainability
Service Offering
▶ How to Ship with DHL Express
Digitalization
Zones and Rates

# HOW TO SHIP WITH DHL EXPRESS

Preparing Your Shipment

Packaging Your Shipment

Paying for Your Shipment

## PREPARING YOUR SHIPMENT INVOICE

This invoice template covers the key data elements required for a successful customs clearance. To help us ensure the service we provide is efficient and high-quality, visit [mydhl.express.dhl](http://mydhl.express.dhl) for more guidance.

COMMERCIAL INVOICE								
<b>SENDER</b>				<b>GENERAL INFORMATION</b>				
Company Name: Contact Name: Building Name: Street Name & Number: Postcode: City/Country: Business/Private: Phone: Email: Tax ID/VAT Number: EORI Number:				Date: Waybill Number: Invoice Number: Shipment Reference Number: Receiver Reference Number:				
<b>RECEIVER</b>				<b>BILLED TO/IMPORTER OF RECORD (IOR) (if different from Receiver)</b>				
Company Name: Contact Name: Building Name: Street Name & Number: Postcode: City/Country: Business/Private: Phone: Email: Tax ID/VAT Number: EORI Number:				Company Name: Contact Name: Building Name: Street Name & Number: Postcode: City/Country: Business/Private: Phone: Email: Tax ID/VAT Number: EORI Number:				
<b>OTHER REMARKS</b>								
Please add any additional critical information or specific country clearance requirements that might be relevant e.g. bank details, special formalities etc.								
Line Number	Full Description of Goods	Commodity Code <small>(Full Import HS Code Preferred)</small>	Country of Origin	Qty	Unit Value & Currency	Sub-Total Value & Currency	Net Weight	Gross Weight
1								
2								
3								
						<b>Total Goods Value &amp; Currency</b>	<b>Total Net Weight</b>	<b>Total Gross Weight</b>
Number of Invoice Line Items: Total Units: Number of Pieces:			Insurance Cost: Freight Cost: Other Costs: VALUE (for Customs Purposes): Import Customs Duties – <i>pre calculated</i> Import Taxes (VAT/GST) – <i>pre calculated</i> TOTAL (with Import Customs Duties/Taxes):					
Reason for Export: Type of Export: INCOTERM: INCOTERM Place:			Terms of Payment: Payer of GST/VAT: Duty/Tax Billing Svc:					
Carrier: Ultimate Consignee:								
Export License Number: Import License Number:								
I/we certify the information on this invoice is true and correct and that the contents of this shipment are as stated above.								
Name: _____			Title: _____			Email: _____		
Date: _____			Signature: _____					



# HOW TO SHIP WITH DHL EXPRESS

---

 Connecting Your World
 

---

 Sustainability
 

---

 Service Offering
 

---

 ► **How to Ship with DHL Express**


---

 Digitalization
 

---

 Zones and Rates
 

---

Preparing Your Shipment

Packaging Your Shipment

Paying for Your Shipment

## PACKAGING YOUR SHIPMENT

To ensure that your shipments travel safely and securely through the DHL Express global network, it is important that they are packaged and labeled correctly.

### Packaging guidelines

- If you are re-using envelopes or boxes, please ensure that old labels and markings are removed
- Securely fix a waybill to each piece in your shipment. The waybill can be thought of as the shipment's airline ticket and it will delay delivery if it becomes separated from your shipment
- The barcodes on the waybill are scanned at numerous points during your shipment's journey. Please ensure the barcode is flat and not covered by tape, shrinkwrap or strapping
- Place a waybill on the top or side of each piece in your shipment and please ensure it does not overlap the corners or edges of boxes
- Use adequate protective wrapping for fragile or delicate items and ensure they are packed as far away as possible from the corners of boxes
- To prevent injury to our employees, please pay special attention to the packaging of sharp items. There should not be any possibility of the contents piercing the packaging
- Any individual pieces over 70kg should be placed on a pallet. If you are sending a multi-piece shipment, it is not necessary to place the individual pieces on a pallet unless they exceed 70kg. For example, a shipment comprising four 25kg pieces does not have to be placed on a pallet

### DHL Express packaging

We offer a range of high-quality DHL Express branded packaging items, suitable for shipping items of all shapes and sizes. The items available include:

- Flyer bags
- Cardboard document envelopes
- Boxes in a range of shapes and sizes

For more information please refer to the Packing Guide available on [dhl.de/express/packaging](https://www.dhl.de/express/packaging).

### Prohibited and Restricted Commodities

#### Prohibited Items

The following items will NOT be accepted for carriage by DHL Express. This list includes items which are prohibited for carriage by any law, regulation or statute of any federal, state or local government of any country from, to or through which the items may be carried. For international carriage there may be additional prohibited items specified by the country of destination. DHL Express may at its sole discretion refuse to carry other items not listed below.

- Bullion (of any precious metal)
- Cannabis or its derivatives
- Cash (legal tender – bank notes, currency notes and coins)
- Complete firearms, ammunition, explosives/explosive devices including inert explosives and test pieces, air guns, replica and imitation firearms
- Human remains or ashes in any form
- Hunting (animal) trophies, animal parts such as ivory and shark's fin, animal remains or ashes, or animal by-products and derived products not intended for human consumption, prohibited for movement by the Convention on International Trade in Endangered Species of Wild Fauna and Flora (CITES) and/or local law
- Illegal goods, such as counterfeit goods and narcotics
- Live animals (including but not limited to mammals, reptiles, fish, invertebrates, amphibians, birds, insects, larvae and pupae)
- Loose lithium metal batteries under IATA PI968 section II
- Loose precious and semi-precious stones (cut or un-cut, polished or un-polished)

Different regulations apply to domestic shipments. Find more details on [dhl.de/express/gefahrutversand](https://www.dhl.de/express/gefahrutversand).

# HOW TO SHIP WITH DHL EXPRESS

## Preparing Your Shipment

### Restricted Items

The following items will NOT be accepted for carriage unless otherwise agreed to by DHL Express. To obtain such agreement a business case will need to be conducted by DHL Express and the items approved for carriage will be recorded in writing with the customer.

- Air guns, tasers, imitation or replica firearms, firearm parts and replica ammunition (includes rifle butts, trigger mechanisms, screws/bolts etc which are manufactured for the sole purpose of creating a functional firearm)
- Antiques and works of art with a shipment value in excess of €500,000
- Banderols/Tax stickers with a shipment value in excess of €500,000
- Cigarettes, cigars, tobacco products and electronic cigarettes with a shipment value in excess of €500,000
- Commemorative coins and medals with an individual value or total shipment value of €2,000 or more are restricted for carriage
- Dangerous/hazardous goods including but not limited to perfumes, aftershaves, aerosols, flammable substances, dry ice, biological substances, UN classified dangerous goods and any goods specified as such under International Air Transport Association regulations ("IATA"), the

## Packaging Your Shipment

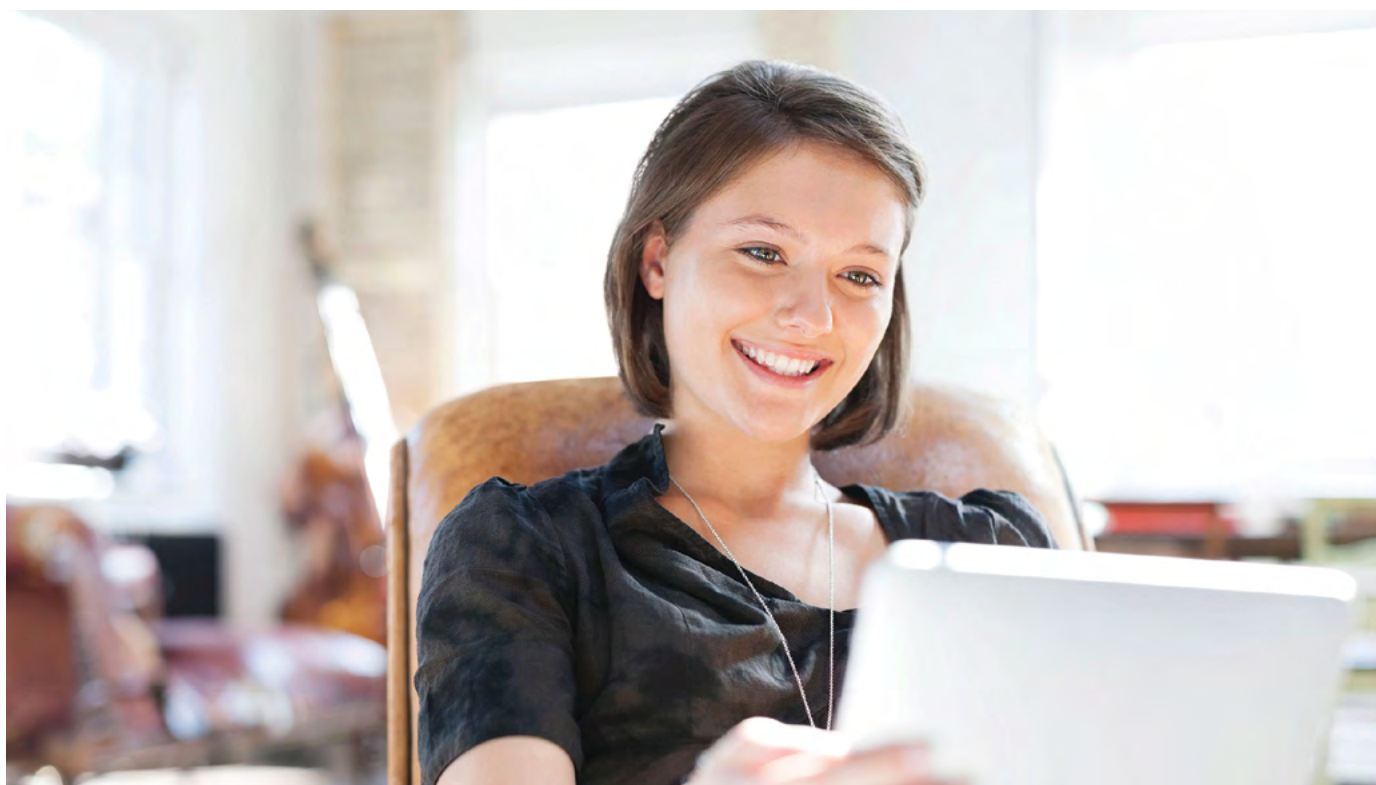
Agreement on Dangerous Goods by Road ("ADR") or International Maritime Dangerous Goods ("IMDG") regulations

- Financial and monetary commodities – examples include but are not limited to activated SIM cards for mobile phones, blank or activated credit or cash dispenser cards, blank checks, event tickets, lottery tickets, money or postal orders, pre-paid phone cards, tickets (blank stock), traveler's checks, vouchers/tokens, unused stamps etc. Applicable to all shipments valued in excess of €500,000
- Furs
- Jewelry and watches and with individual values in excess of €5,000. The shipment must not exceed €100,000

## Paying for Your Shipment

### PAYING FOR YOUR SHIPMENT

You can pay for DHL Express services either with cash, a credit card or by bank transfer. You can open an account with DHL Express to pay via bank transfer; and all account customers receive invoices on a pre-agreed basis. For more details, please get in touch with a Customer Service Advisor at your local DHL Express office or go to [dhl.de/express/e-billing](https://www.dhl.de/express/e-billing).





# DIGITALIZATION

- Connecting Your World
- Sustainability
- Service Offering
- How to Ship with DHL Express
- Digitalization
- Zones and Rates

**Digitalization is one of the most important trends impacting logistics, and it is one of the key pillars of DHL Group’s Strategy 2025. Through digitalization we bring benefits for our customers, our operations and our own people.**

We invest continually in market-leading technologies to help our customers to manage and monitor shipments, create shipping labels, get quotes, schedule courier pickups, connect with us and more. Digitalizing our operations provides more transparency, allowing us to better anticipate and meet our customers’ needs.

## MYDHL+



MyDHL+ re-imagines the way the shipping business does business, by combining the tools and services our customers use most. With its mobile friendly and intuitive interface, customers can now import, export, schedule a pickup, track shipments and pay bills more quickly than ever – all in one visit, with one password and zero headaches. MyDHL+ makes it incredibly easy to navigate the complexities of international shipping.

[mydhl.express.dhl](https://mydhl.express.dhl)

## MY GLOBAL TRADE SERVICES



My Global Trade Services (MyGTS) is your trusted advisor for cross-border trade – taking the complexity out of customs. If you are wondering what the harmonized shipping (HS) codes are for your goods, what the estimated total cost of your shipment will be, what can help get your goods cleared, and what documentation may be required, find the answers to these questions and more on our online MyGTS portal.

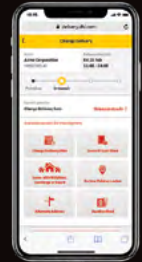
And the benefits for you? You can support clearing customs more quickly and more accurately, help avoid delays and unexpected customs or tax costs, and pre-plan your shipment journeys so that you understand potential prohibitions and restrictions.

[dhl.com/express/mygts](https://dhl.com/express/mygts)



## ON DEMAND DELIVERY

DHL Express’ On Demand Delivery tool keeps receivers informed of shipment progress, allowing them to reschedule, reroute, release or conveniently collect from a DHL Express Service Point. It is an innovative, easy-to-use, mobile-friendly service, especially for residential deliveries.



[ondemand.dhl.com](https://ondemand.dhl.com)

Designed to enhance the online shopper’s experience, the service is available globally, meaning consistent service standards and a harmonized user experience.



Scheduled delivery



Signature release/leave your signature



Alternative address



Collect from Service Point



Vacation hold



Leave with neighbor

## DHL EXPRESS COMMERCE

Take your website international with DHL Express Commerce. Offer your customers all the benefits of DHL Express at your checkout in real-time. Import, manage and ship their orders quickly and efficiently with no complicated development. Add the power of DHL Express to your e-commerce business quickly and easily, giving you the competitive edge. DHL Express Commerce integrates with the biggest e-commerce platforms, including: Magento, Shopify, WooCommerce, Amazon and eBay.

# DIGITALIZATION

- Connecting Your World
- Sustainability
- Service Offering
- How to Ship with DHL Express
- ▶ Digitalization
- Zones and Rates

## DHL EXPRESS MOBILE APP



The DHL Express Mobile app lets you create and track your shipments, and manage your deliveries all in one place. You can locate the nearest DHL Service Point for parcel drop off or collection, and quickly check shipping rates too – right on your smartphone. Advanced GPS location services and camera barcode scanning are also available. Download DHL Express Mobile today, on Android or iOS.



## DIGITAL ASSISTANT

Our Digital Assistant is a live chat helpdesk that offers a 24/7 service across multiple online channels and platforms, and in 41 languages, including German. It tracks your shipments, answers queries and directs you to FAQs.



[Chat with us now!](#)



## ROBOTICS

Driven by rapid technological advancements and increasing supply chain complexity, robotics solutions are entering the logistics environment, boosting productivity and driving zero-defect processes.

Robots are adopting more roles at DHL Express, assisting workers with the most repetitive and labor-intensive tasks and freeing them up to do higher-order, customer-facing activities. Examples include the use of articulated robotic arms for sorting inbound packages to last-mile delivery routes. We have four such robots in use globally, with this number set to double soon.

Our robots help get couriers out on the road faster – which means your parcels get delivered faster.

## DIGITAL TRUST


Logistics requires transferring data and content around the world and we embrace a responsibility to do this securely. Our standards led by our Binding Corporate Rules and by our [Data Privacy Policy](#) apply throughout the DHL Group and are approved by the Supervisory Authorities. We maintain a comprehensive [Information Security](#) and [Data Protection](#) approach based on ISO/IEC 27001:2013 and GDPR, to ensure a high standard when managing customer information assets and personal data. We aim to provide a rapid response to any security incident via our 24x7 Cyber Defence Centre (CDC) with global coverage and our global DPO community.

DHL Group acts as controller in respect of any personal data it receives from customers and holds to effectively provide transportation services and in regard to the delivery of any shipments or documents that it processes to perform its contractual obligations. DHL Group will act as a data controller when an individual is executing their rights under privacy legislations.


# ZONES AND RATES

[Calculate the Price of Your Shipment](#)
[Optional Services](#)
[Surcharges](#)
[Customs Services](#)
[Service Capability and Rating Zones](#)
[Export Services](#)
[Import Services](#)
[Domestic Services](#)


## CALCULATE THE PRICE OF YOUR SHIPMENT




Determine which zone your destination is in and whether yours is a document or non-document shipment.



Is your shipment international or domestic and how quickly do you want it to arrive?



Based on weight, zone and speed, confirm your base price for exports, imports and domestic services.



Add any optional services and check if any surcharges apply.

Base price + Optional services + Surcharges = **Total price**

## OPTIONAL SERVICES

[View explanation](#)

Optional services	Charging method	Charge
GoGreen Plus	Per shipment	Minimum €0.18 per kg
Dedicated Pickup	Per shipment	€0.45 per kg with minimum of €30
Dedicated Delivery	Per shipment	€0.45 per kg with minimum of €40
Saturday Pickup	Per shipment	€30
Saturday Delivery	Per shipment	€40
Receiver Paid	-	Import standard rates apply
Shipment Insurance	By shipment value	1% of stated shipment value (minimum €12)
Extended Liability	Per shipment	€5
<b>Packaging Supplies</b>		
Plastic Flyer Stack	Per stack	€20 per stack (100 flyers)
Bulk Packaging	Per stack	Variable
<b>Duty Billing Services</b>		
Duty Tax Paid	% of fiscal charges	2% of fiscal charges with minimum of €16
Duty Tax Processing: Account Customers	% of fiscal charges	2% of fiscal charges with minimum of €12.50
Duty Tax Processing: Non-Account Customers	% of fiscal charges	2% of fiscal charges with minimum of €12.50
Residential Address	Per shipment	€5
Hold for Collection	No charge	No charge
Direct Signature	Per shipment	€5
Adult Signature	Per shipment	€5
No Signature Required	No charge	No charge
Printed Invoice	Per invoice	€3
Change of Billing	Per invoice	€12
Neutral Delivery	Per shipment	€5

For a full list of optional services, please visit [dhl.de/express/products-services](https://dhl.de/express/products-services).

# ZONES AND RATES

[Calculate the Price of Your Shipment](#)
[Optional Services](#)
[Surcharges](#)
[Customs Services](#)
[Service Capability and Rating Zones](#)
[Export Services](#)
[Import Services](#)
[Domestic Services](#)

## SURCHARGES

[View explanation](#)

Surcharges	Charging method	Charge
Fuel Surcharge	Per shipment	Percentage of transportation and additional charges, as per index; <a href="https://www.dhl.de/express/surcharges">dhl.de/express/surcharges</a>
Remote Area	Per shipment	€0.50 per kg (€21 minimum per shipment)
<b>Additional Handling</b>		
Overweight Piece	Per piece	€95
Oversize Piece	Per piece	€50
Non-Stackable Pallet	Per piece	€275
Demand Surcharge	Variable by lane and weight	Variable by lane and weight
Emergency Situation	Variable by lane and weight	Variable by lane and weight
<b>Dangerous Goods</b>		
Excepted Quantities	Per shipment	€10
Dry Ice (UN1845)	Per shipment	€12
Lithium Batteries <b>with</b> equipment		
Lithium Ion PI966, Section II	Per shipment	€5
Lithium Metal PI969, Section II	Per shipment	€5
Lithium Batteries <b>in</b> equipment	No charge	No charge
Full Dangerous Goods	Per shipment	€100
Consumer Goods ID8000	Per shipment	€25
Limited Quantities	Per shipment	€25
Address Correction	Per shipment	€11
Data Entry	Per shipment	€10
<b>Security Charges</b>		
Elevated Risk	Per shipment	€30
Restricted Destination	Per shipment	€30

For a full list of surcharges, please visit [dhl.de/express/surcharges](https://www.dhl.de/express/surcharges).

# ZONES AND RATES

[Calculate the Price of Your Shipment](#)
[Optional Services](#)
[Surcharges](#)
[Customs Services](#)
[Service Capability and Rating Zones](#)
[Export Services](#)
[Import Services](#)
[Domestic Services](#)

## CUSTOMS SERVICES

[View explanation](#)

Customs services	Charging method	Charge
Non-Routine Entry	Per shipment	€45
Clearance Processing	Per shipment	€10
Permits and Licenses	Per shipment	€45 plus cost of certificate
Bonded Storage	Per shipment, per day after three calendar days	€11 per day and €0.22 per kg/day (both per day after three calendar days)
Multiline Entry	Rate per line, after six lines	€5
Release to Broker	Per shipment	€45
Broker Notification	Per shipment	€12
Other Government Agency	Per shipment	€45 per document presentation €180 per physical presentation
Bonded Transit	Per shipment	€45
Export Declaration	Per shipment	€33
Post-Clearance Modification	Per shipment	€50
Customs Physical Intervention	Per shipment	€35

For a full list of customs services, please visit [dhl.de/express/customs](https://dhl.de/express/customs).



- Connecting Your World
- Sustainability
- Service Offering
- How to Ship with DHL Express
- Digitalization
- ▶ Zones and Rates

# ZONES AND RATES

- Calculate the Price of Your Shipment
- Optional Services
- Surcharges
- Customs Services
- Service Capability and Rating Zones
- Export Services
- Import Services
- Domestic Services

## SERVICE CAPABILITY AND RATING ZONES

Country/Territory	Zone	Time Definite Services				Day Definite Services	
		DHL Express Worldwide	DHL Express 12:00	DHL Express 9:00	Import	DHL Economy Select	Import
Afghanistan	10						
Albania	6	✓			✓		
Algeria	10	✓			✓		
American Samoa	10	✓			✓		
Andorra	5	✓	✓	✓	✓		
Angola	10	✓	✓		✓		
Anguilla	10	✓			✓		
Antigua	10	✓			✓		
Argentina	10	✓	✓		✓		
Armenia	10	✓			✓		
Aruba	10	✓			✓		
Australia	9	✓	✓		✓		
Austria	2	✓	✓	✓	✓	✓	✓
Azerbaijan	10	✓			✓		
Bahamas	10	✓			✓		
Bahrain	9	✓	✓	✓	✓		
Bangladesh	10	✓			✓		
Barbados	10	✓			✓		
Belarus	8						
Belgium	1	✓	✓	✓	✓	✓	✓
Belize	10	✓			✓		
Benin	10	✓			✓		
Bermuda	10	✓			✓		
Bhutan	10	✓			✓		
Bolivia	10	✓			✓		
Bonaire	10	✓			✓		
Bosnia and Herzegovina	6	✓			✓		
Botswana	10	✓			✓		
Brazil	10	✓	✓		✓		
Brunei	10	✓			✓		
Bulgaria	4	✓	✓		✓	✓	✓
Burkina Faso	10	✓	✓		✓		
Burundi	10	✓			✓		
Cambodia	10	✓	✓		✓		
Cameroon	10	✓	✓		✓		
Canada	7	✓	✓	✓	✓		
Canary Islands, The	6	✓			✓		
Cape Verde	10	✓			✓		
Cayman Islands	10	✓			✓		
Central African Republic	10	✓			✓		
Chad	10	✓			✓		
Chile	10	✓			✓		
China, People's Republic	8	✓	✓		✓		
Colombia	10	✓	✓		✓		
Comoros	10	✓			✓		
Congo	10	✓			✓		
Congo, Democratic Rep. of	10	✓	✓		✓		
Cook Islands	10	✓			✓		
Costa Rica	10	✓			✓		
Cote d'Ivoire	10	✓	✓		✓		
Croatia	4	✓	✓		✓	✓	✓
Cuba	10	✓			✓		
Curacao	10	✓			✓		
Cyprus	4	✓	✓		✓		
Czech Republic, The	3	✓	✓	✓	✓	✓	✓
Denmark	2	✓	✓	✓	✓	✓	✓
Djibouti	10	✓			✓		
Dominica	10	✓			✓		
Dominican Republic	10	✓			✓		

doc = document contents only ✓ = document and non-document contents

*Continues overleaf*

For transit times and the availability of DHL Express 12:00 and DHL Express 9:00 for your origin and destination address, please refer to the DHL Express Capability Tool at [dct.dhl.com](https://dct.dhl.com). Pieces with a single base length up to 300cm are accepted. Additional surcharges may apply.

- Connecting Your World
- Sustainability
- Service Offering
- How to Ship with DHL Express
- Digitalization
- ▶ Zones and Rates

# ZONES AND RATES

- Calculate the Price of Your Shipment
- Optional Services
- Surcharges
- Customs Services
- Service Capability and Rating Zones
- Export Services
- Import Services
- Domestic Services

## ➔ SERVICE CAPABILITY AND RATING ZONES

Country/Territory	Zone	Time Definite Services				Day Definite Services	
		DHL Express Worldwide	DHL Express 12:00	DHL Express 9:00	Import	DHL Economy Select	Import
Ecuador	10	✓	✓		✓		
Egypt	9	✓	✓	✓	✓		
El Salvador	10	✓			✓		
Eritrea	10	✓			✓		
Estonia	4	✓	✓		✓	✓	✓
Eswatini	10	✓			✓		
Ethiopia	10	✓			✓		
Falkland Islands	10	✓			✓		
Faroe Islands	5	✓					
Fiji	10	✓			✓		
Finland	4	✓	✓		✓	✓	✓
France	2	✓	✓	✓	✓	✓	✓
French Guiana	10	✓			✓		
Gabon	10	✓	✓		✓		
Gambia	10	✓			✓		
Georgia	10	✓			✓		
Ghana	10	✓	✓		✓		
Gibraltar	5	✓	✓	✓	✓		
Greece	4	✓	✓		✓	✓	✓
Greenland	10	✓					
Grenada	10	✓			✓		
Guadeloupe	10	✓			✓		
Guam	10	✓			✓		
Guatemala	10	✓			✓		
Guernsey	5	✓	✓	✓	✓		
Guinea Republic	10	✓			✓		
Guinea-Bissau	10	✓			✓		
Guinea-Equatorial	10	✓			✓		
Guyana (British)	10	✓			✓		
Haiti	10	✓			✓		
Honduras	10	✓			✓		
Hong Kong SAR China	8	✓	✓	✓	✓		
Hungary	4	✓	✓		✓	✓	✓
Iceland	6	✓	✓		✓		
India	8	✓	✓		✓		
Indonesia	9	✓			✓		
Iran, Islamic Rep. of	10	✓			✓		
Iraq	10	✓			✓		
Ireland, Rep. of	3	✓	✓	✓	✓	✓	✓
Israel	6	✓			✓		
Italy	3	✓	✓	✓	✓	✓	✓
Jamaica	10	✓			✓		
Japan	8	✓	✓		✓		
Jersey	5	✓	✓	✓	✓		
Jordan	10	✓	✓	✓	✓		
Kazakhstan	10	✓	✓		✓		
Kenya	10	✓	✓	✓	✓		
Kiribati	10	✓			✓		
Korea, D.P.R. of (North)	10	✓			✓		
Korea, Rep. of (South)	8	✓	✓		✓		
Kosovo	6	✓			✓		
Kuwait	9	✓	✓	✓	✓		
Kyrgyzstan	10	✓			✓		
Lao P.D.R.	10	✓			✓		
Latvia	4	✓	✓		✓	✓	✓
Lebanon	10	✓	✓	✓	✓		
Lesotho	10	✓			✓		
Liberia	10	✓			✓		
Libya	10	✓			✓		

doc = document contents only ✓ = document and non-document contents

Continues overleaf

For transit times and the availability of DHL Express 12:00 and DHL Express 9:00 for your origin and destination address, please refer to the DHL Express Capability Tool at [dct.dhl.com](https://dct.dhl.com). Pieces with a single base length up to 300cm are accepted. Additional surcharges may apply.

- Connecting Your World
- Sustainability
- Service Offering
- How to Ship with DHL Express
- Digitalization
- ▶ Zones and Rates

# ZONES AND RATES

- Calculate the Price of Your Shipment
- Optional Services
- Surcharges
- Customs Services
- Service Capability and Rating Zones
- Export Services
- Import Services
- Domestic Services

## ➔ SERVICE CAPABILITY AND RATING ZONES

Country/Territory	Zone	Time Definite Services				Day Definite Services	
		DHL Express Worldwide	DHL Express 12:00	DHL Express 9:00	Import	DHL Economy Select	Import
Liechtenstein	5	✓	✓		✓	✓	✓
Lithuania	4	✓	✓		✓	✓	✓
Luxembourg	1	✓	✓	✓	✓	✓	✓
Macau SAR China	10	✓	✓		✓		
Madagascar	10	✓	✓		✓		
Malawi	10	✓			✓		
Malaysia	8	✓	✓		✓		
Maldives	10	✓			✓		
Mali	10	✓			✓		
Malta	4	✓			✓		
Marshall Islands	10	✓			✓		
Martinique	10	✓			✓		
Mauritania	10	✓			✓		
Mauritius	10	✓			✓		
Mayotte	10	✓			✓		
Mexico	7	✓			✓		
Micronesia, Fed. States of	10	✓			✓		
Moldova, Rep. of	10	✓			✓		
Monaco	2	✓	✓		✓	✓	✓
Mongolia	10	✓			✓		
Montenegro, Rep. of	6	✓			✓		
Montserrat	10	✓			✓		
Morocco	10	✓			✓		
Mozambique	10	✓	✓		✓		
Myanmar	10	✓	✓		✓		
Namibia	10	✓	✓		✓		
Nauru, Rep. of	10	✓			✓		
Nepal	10	✓			✓		
Netherlands, The	1	✓	✓	✓	✓	✓	✓
Nevis	10	✓			✓		
New Caledonia	10	✓			✓		
New Zealand	9	✓			✓		
Nicaragua	10	✓			✓		
Niger	10	✓			✓		
Nigeria	10	✓	✓		✓		
Niue	10	✓			✓		
North Macedonia	6	✓			✓		
Northern Ireland	3	✓	✓	✓	✓	✓	✓
Northern Mariana Islands	10	✓			✓		
Norway	6	✓	✓		✓	✓	✓
Oman	9	✓	✓		✓		
Pakistan	10	✓			✓		
Palau	10	✓			✓		
Panama	10	✓	✓		✓		
Papua New Guinea	10	✓			✓		
Paraguay	10	✓	✓		✓		
Peru	10	✓			✓		
Philippines, The	9	✓	✓	✓	✓		
Poland	3	✓	✓	✓	✓		✓
Portugal	4	✓	✓		✓	✓	✓
Puerto Rico	10	✓			✓		
Qatar	9	✓	✓	✓	✓		
Reunion, Island of	10	✓			✓		
Romania	4	✓	✓		✓	✓	✓
Russian Federation, The	8						
Rwanda	10	✓			✓		
Samoa	10	✓			✓		
San Marino	5	✓	✓	✓	✓	✓	✓

doc = document contents only ✓ = document and non-document contents

Continues overleaf

For transit times and the availability of DHL Express 12:00 and DHL Express 9:00 for your origin and destination address, please refer to the DHL Express Capability Tool at [dct.dhl.com](https://dct.dhl.com). Pieces with a single base length up to 300cm are accepted. Additional surcharges may apply.



- Connecting Your World
- Sustainability
- Service Offering
- How to Ship with DHL Express
- Digitalization
- Zones and Rates**

# ZONES AND RATES

- Calculate the Price of Your Shipment
- Optional Services
- Surcharges
- Customs Services
- Service Capability and Rating Zones
- Export Services
- Import Services
- Domestic Services

## ➔ SERVICE CAPABILITY AND RATING ZONES

Country/Territory	Zone	Time Definite Services				Day Definite Services	
		DHL Express Worldwide	DHL Express 12:00	DHL Express 9:00	Import	DHL Economy Select	Import
Sao Tome & Principe	10	✓			✓		
Saudi Arabia	9	✓	✓	✓	✓		
Senegal	10	✓	✓		✓		
Serbia, Rep. of	6	✓			✓	✓	✓
Seychelles	10	✓			✓		
Sierra Leone	10	✓			✓		
Singapore	8	✓	✓	✓	✓		
Slovakia	4	✓	✓	✓	✓	✓	✓
Slovenia	4	✓	✓		✓	✓	✓
Solomon Islands	10	✓			✓		
Somalia	10	✓			✓		
Somaliland, Rep. (N. Somalia)	10	✓			✓		
South Africa	9	✓	✓	✓	✓		
South Sudan	10	✓			✓		
Spain	3	✓	✓	✓	✓	✓	✓
Sri Lanka	8	✓	✓		✓		
St. Barthelemy	10	✓			✓		
St. Eustatius	10	✓			✓		
St. Helena	10	✓			✓		
St. Kitts	10	✓			✓		
St. Lucia	10	✓			✓		
St. Maarten	10	✓			✓		
St. Vincent	10	✓			✓		
Sudan	10	✓			✓		
Suriname	10	✓			✓		
Sweden	4	✓	✓	✓	✓	✓	✓
Switzerland	5	✓	✓	✓	✓	✓	✓
Syria	9	✓			✓		
Tahiti	10	✓			✓		
Taiwan, China	8	✓	✓	✓	✓		
Tajikistan	10	✓			✓		
Tanzania	10	✓			✓		
Thailand	8	✓	✓	✓	✓		
Timor-Leste	10	✓			✓		
Togo	10	✓			✓		
Tonga	10	✓			✓		
Trinidad and Tobago	10	✓			✓		
Tunisia	10	✓			✓		
Türkiye	6	✓	✓		✓		
Turkmenistan	10	✓			✓		
Turks and Caicos Islands	10	✓			✓		
Tuvalu	10	✓			✓		
Uganda	10	✓	✓		✓		
Ukraine	8	✓			✓		
United Arab Emirates	9	✓	✓	✓	✓		
United Kingdom exc: N. Ireland	5	✓	✓	✓	✓	✓	✓
United States of America	7	✓	✓	10:30	✓		
Uruguay	10	✓			✓		
Uzbekistan	10	✓			✓		
Vanuatu	10	✓			✓		
Vatican City	3	✓			✓	✓	✓
Venezuela	10	✓			✓		
Vietnam	10	✓	✓		✓		
Virgin Islands (British)	10	✓			✓		
Virgin Islands (US)	10	✓			✓		
Yemen, Rep. of	9	✓			✓		
Zambia	10	✓	✓		✓		
Zimbabwe	10	✓	✓		✓		

doc = document contents only ✓ = document and non-document contents

For transit times and the availability of DHL Express 12:00 and DHL Express 9:00 for your origin and destination address, please refer to the DHL Express Capability Tool at [dct.dhl.com](https://dct.dhl.com). Pieces with a single base length up to 300cm are accepted. Additional surcharges may apply.

- Connecting Your World
- Sustainability
- Service Offering
- How to Ship with DHL Express
- Digitalization
- ▶ Zones and Rates

# ZONES AND RATES

Calculate the Price of Your Shipment    Optional Services    Surcharges    Customs Services    Service Capability and Rating Zones    Export Services    Import Services    Domestic Services

## Export rates by zone and product

### DHL EXPRESS WORLDWIDE

Weight in kg	Zone 1	Zone 2	Zone 3	Zone 4	Zone 5	Zone 6	Zone 7	Zone 8	Zone 9	Zone 10
Envelopes up to 0.3kg										
0.3	57.19	62.91	66.05	69.36	66.05	73.86	80.83	88.91	99.58	111.52
Documents only up to 2kg										
0.5	67.28	74.02	77.72	81.60	77.72	86.89	95.08	104.59	117.14	131.20
1	68.88	75.78	79.67	83.73	79.86	89.23	97.78	107.70	120.71	135.30
1.5	70.80	77.90	82.00	86.30	82.41	92.04	102.84	113.53	127.41	143.00
2	72.72	80.02	84.33	88.87	84.96	94.85	107.90	119.36	134.11	150.70
Documents from 2.5kg and non-documents from 0.5kg										
0.5	67.28	74.02	77.72	81.60	89.76	98.73	105.65	116.21	130.15	145.77
1	68.88	75.78	79.67	83.73	91.89	101.07	108.34	119.31	133.72	149.89
1.5	70.80	77.90	82.00	86.30	94.46	103.88	113.40	125.14	140.42	157.59
2	72.72	80.02	84.33	88.87	97.03	106.69	118.46	130.97	147.12	165.29
2.5	74.95	82.49	87.05	91.85	100.02	109.97	122.23	135.31	152.11	171.03
3	77.32	85.10	89.93	95.01	103.18	113.44	128.13	145.35	169.17	190.64
3.5	79.69	87.71	92.81	98.17	106.34	116.91	134.03	155.39	186.23	210.25
4	82.06	90.32	95.69	101.33	109.50	120.38	139.93	165.43	203.29	229.86
4.5	84.43	92.93	98.57	104.49	112.66	123.85	145.83	175.47	220.35	249.47
5	86.80	95.54	101.45	107.65	115.82	127.32	151.73	185.51	237.41	269.08
5.5	89.61	98.64	104.86	111.40	119.57	131.45	158.74	194.64	252.92	286.91
6	92.42	101.74	108.27	115.15	123.32	135.58	165.75	203.77	268.43	304.74
6.5	95.23	104.84	111.68	118.90	127.07	139.71	172.76	212.90	283.94	322.57
7	98.04	107.94	115.09	122.65	130.82	143.84	179.77	222.03	299.45	340.40
7.5	100.85	111.04	118.50	126.40	134.57	147.97	186.78	231.16	314.96	358.23
8	103.66	114.14	121.91	130.15	138.32	152.10	193.79	240.29	330.47	376.06
8.5	106.47	117.24	125.32	133.90	142.07	156.23	200.80	249.42	345.98	393.89
9	109.28	120.34	128.73	137.65	145.82	160.36	207.81	258.55	361.49	411.72
9.5	112.09	123.44	132.14	141.40	149.57	164.49	214.82	267.68	377.00	429.55
10	114.90	126.54	135.55	145.15	153.32	168.62	221.83	276.81	392.51	447.38
11	121.32	133.90	143.81	154.13	162.80	179.82	239.75	298.31	419.39	478.30
12	127.74	141.26	152.07	163.11	172.28	191.02	257.67	319.81	446.27	509.22
13	134.16	148.62	160.33	172.09	181.76	202.22	275.59	341.31	473.15	540.14
14	140.58	155.98	168.59	181.07	191.24	213.42	293.51	362.81	500.03	571.06
15	147.00	163.34	176.85	190.05	200.72	224.62	311.43	384.31	526.91	601.98
16	153.42	170.70	185.11	199.03	210.20	235.82	329.35	405.81	553.79	632.90
17	159.84	178.06	193.37	208.01	219.68	247.02	347.27	427.31	580.67	663.82
18	166.26	185.42	201.63	216.99	229.16	258.22	365.19	448.81	607.55	694.74

Continues overleaf

# ZONES AND RATES

[Calculate the Price of Your Shipment](#)
[Optional Services](#)
[Surcharges](#)
[Customs Services](#)
[Service Capability and Rating Zones](#)
[Export Services](#)
[Import Services](#)
[Domestic Services](#)

## Export rates by zone and product

### ➔ DHL EXPRESS WORLDWIDE

Weight in kg	Zone 1	Zone 2	Zone 3	Zone 4	Zone 5	Zone 6	Zone 7	Zone 8	Zone 9	Zone 10
19	172.68	192.78	209.89	225.97	238.64	269.42	383.11	470.31	634.43	725.66
20	179.10	200.14	218.15	234.95	248.12	280.62	401.03	491.81	661.31	756.58
21	186.46	208.60	227.41	245.19	259.02	293.50	421.65	514.07	689.13	788.58
22	193.82	217.06	236.67	255.43	269.92	306.38	442.27	536.33	716.95	820.58
23	201.18	225.52	245.93	265.67	280.82	319.26	462.89	558.59	744.77	852.58
24	208.54	233.98	255.19	275.91	291.72	332.14	483.51	580.85	772.59	884.58
25	215.90	242.44	264.45	286.15	302.62	345.02	504.13	603.11	800.41	916.58
26	223.26	250.90	273.71	296.39	313.52	357.90	524.75	625.37	828.23	948.58
27	230.62	259.36	282.97	306.63	324.42	370.78	545.37	647.63	856.05	980.58
28	237.98	267.82	292.23	316.87	335.32	383.66	565.99	669.89	883.87	1,012.58
29	245.34	276.28	301.49	327.11	346.22	396.54	586.61	692.15	911.69	1,044.58
30	252.70	284.74	310.75	337.35	357.12	409.42	607.23	714.41	939.51	1,076.58
40	335.30	382.24	414.35	455.95	482.62	561.42	797.23	919.61	1,185.81	1,372.08
50	417.90	479.74	517.95	574.55	608.12	713.42	987.23	1,124.81	1,432.11	1,667.58
60	500.50	577.24	621.55	693.15	733.62	865.42	1,177.23	1,330.01	1,678.41	1,963.08
70	583.10	674.74	725.15	811.75	859.12	1,017.42	1,367.23	1,535.21	1,924.71	2,258.58
For each additional 0.5kg										
Above 10	3.21	3.68	4.13	4.49	4.74	5.60	8.96	10.75	13.44	15.46
Above 20	3.68	4.23	4.63	5.12	5.45	6.44	10.31	11.13	13.91	16.00
For each additional 1kg										
30.1 - 70.0	8.26	9.75	10.36	11.86	12.55	15.20	19.00	20.52	24.63	29.55
70.1 - 300.0	9.24	11.21	12.04	12.82	13.81	16.71	21.73	27.16	32.59	39.13
300.1 - 3,000*	10.18	12.33	13.14	14.10	15.19	18.39	23.91	31.08	37.29	44.76

**DHL Express 12:00** – Guaranteed delivery before 12:00 on the next possible working day to over 86 countries worldwide.

Add €5.00 to the DHL Express Worldwide prices.

**DHL Express 9:00 (10:30 to the USA)** – Guaranteed delivery before 9:00 on the next possible working day to over 38 countries worldwide. Add €35.00 (€15.00 to the USA) to the DHL Express Worldwide prices.

Rates are rounded up to the nearest 0.5kg for shipments up to 30kg, and to the nearest 1kg thereafter. Each piece weight is rounded up to the nearest 0.5kg.

Rates are in Euro and exclude customs duties, taxes, clearance-related charges, VAT and all surcharges. DHL Express terms and conditions apply – see [dhl.de/express/gtc](https://www.dhl.de/express/gtc) for details.

\*DHL Express does not accept shipments exceeding 3,000kg, or containing pieces exceeding 1,000kg or 300cm in length, and/or not meeting DHL Express standards for packing. Refer to our Packing Guide on [dhl.de/express/packaging](https://www.dhl.de/express/packaging). These network restrictions are subject to change with 30 days' notice.

In the event any country leaves the European Union, DHL Express reserves the right to change rates or zones with 30 days' notice.

# ZONES AND RATES

[Calculate the Price of Your Shipment](#)
[Optional Services](#)
[Surcharges](#)
[Customs Services](#)
[Service Capability and Rating Zones](#)
[Export Services](#)
[Import Services](#)
[Domestic Services](#)

## Export rates by zone and product

### DHL ECONOMY SELECT

Weight in kg	Zone 1	Zone 2	Zone 3	Zone 4/5/6
Documents and non-documents from 1kg				
1	50.78	55.86	61.44	79.83
2	51.54	56.67	62.39	81.04
3	52.30	57.49	63.35	82.25
4	53.06	58.31	64.31	83.46
5	53.82	59.13	65.27	84.67
6	54.58	59.95	66.23	85.88
7	55.34	60.77	67.19	87.09
8	56.10	61.59	68.15	88.30
9	56.86	62.41	69.11	89.51
10	57.62	63.23	70.07	90.72
11	60.23	66.09	73.24	94.78
12	62.84	68.95	76.41	98.84
13	65.45	71.81	79.58	102.90
14	68.06	74.67	82.75	106.96
15	70.67	77.53	85.92	111.02
16	73.28	80.39	89.09	115.08
17	75.89	83.25	92.26	119.14
18	78.50	86.11	95.43	123.20
19	81.11	88.97	98.60	127.26
20	83.72	91.83	101.77	131.32
21	88.16	96.73	107.17	138.30
22	92.60	101.63	112.57	145.28
23	97.04	106.53	117.97	152.26
24	101.48	111.43	123.37	159.24
25	105.92	116.33	128.77	166.22
26	110.36	121.23	134.17	173.20
27	114.80	126.13	139.57	180.18
28	119.24	131.03	144.97	187.16
29	123.68	135.93	150.37	194.14
30	128.12	140.83	155.77	201.12

Continues overleaf

# ZONES AND RATES

[Calculate the Price of Your Shipment](#)
[Optional Services](#)
[Surcharges](#)
[Customs Services](#)
[Service Capability and Rating Zones](#)
[Export Services](#)
[Import Services](#)
[Domestic Services](#)

## Export rates by zone and product

### ➔ DHL ECONOMY SELECT

Weight in kg	Zone 1	Zone 2	Zone 3	Zone 4/5/6
40	169.42	186.63	205.77	265.82
50	210.72	232.43	255.77	330.52
60	252.02	278.23	305.77	395.22
70	293.32	324.03	355.77	459.92
80	331.40	365.91	401.85	519.82
90	369.48	407.79	447.93	579.72
100	407.56	449.67	494.01	639.62
For each additional 1kg				
Above 30	4.13	4.58	5.00	6.47
For each additional 5kg				
Above 70	19.04	20.94	23.04	29.95
Above 300*	21.57	23.74	26.09	33.94

Rates are rounded up to the nearest 1kg for shipments up to 70kg, and to the nearest 5kg thereafter. Each piece weight is rounded up to the nearest 1kg.

Rates are in Euro and exclude customs duties, taxes, clearance-related charges, VAT and all surcharges. DHL Express terms and conditions apply – see [dhl.de/express/gtc](https://www.dhl.de/express/gtc) for details.

\*DHL Express does not accept shipments exceeding 1,000kg, or containing pieces exceeding 1,000kg or 300cm in length, and/or not meeting DHL Express standards for packing. Refer to our Packing Guide on [dhl.de/express/packaging](https://www.dhl.de/express/packaging). These network restrictions are subject to change with 30 days' notice.

In the event any country leaves the European Union, DHL Express reserves the right to change rates or zones with 30 days' notice.

- Connecting Your World
- Sustainability
- Service Offering
- How to Ship with DHL Express
- Digitalization
- ▶ Zones and Rates

# ZONES AND RATES

- Calculate the Price of Your Shipment
- Optional Services
- Surcharges
- Customs Services
- Service Capability and Rating Zones
- Export Services
- Import Services
- Domestic Services

## Import rates by zone and product

### DHL EXPRESS WORLDWIDE IMPORT

Weight in kg	Zone 1	Zone 2	Zone 3	Zone 4	Zone 5	Zone 6	Zone 7	Zone 8	Zone 9	Zone 10
Documents only up to 2kg										
0.5	67.28	74.02	77.72	81.60	77.72	86.89	114.09	125.52	140.57	157.43
1	68.88	75.78	79.67	83.73	79.86	89.23	117.34	129.24	144.85	162.36
1.5	70.80	77.90	82.00	86.30	82.41	92.04	123.42	136.23	152.89	171.62
2	72.72	80.02	84.33	88.87	84.96	94.85	129.50	143.22	160.93	180.88
Documents from 2.5kg and non-documents from 0.5kg										
0.5	67.28	74.02	77.72	81.60	89.76	98.73	126.77	139.45	156.19	174.93
1	68.88	75.78	79.67	83.73	91.89	101.07	130.01	143.18	160.47	179.86
1.5	70.80	77.90	82.00	86.30	94.46	103.88	136.09	150.16	168.51	189.12
2	72.72	80.02	84.33	88.87	97.03	106.69	142.17	157.14	176.55	198.38
2.5	74.95	82.49	87.05	91.85	100.02	109.97	146.69	162.35	182.55	205.28
3	77.32	85.10	89.93	95.01	103.18	113.44	153.77	174.39	203.02	228.81
3.5	79.69	87.71	92.81	98.17	106.34	116.91	160.85	186.43	223.49	252.34
4	82.06	90.32	95.69	101.33	109.50	120.38	167.93	198.47	243.96	275.87
4.5	84.43	92.93	98.57	104.49	112.66	123.85	175.01	210.51	264.43	299.40
5	86.80	95.54	101.45	107.65	115.82	127.32	182.09	222.55	284.90	322.93
5.5	89.61	98.64	104.86	111.40	119.57	131.45	190.51	233.50	303.52	344.33
6	92.42	101.74	108.27	115.15	123.32	135.58	198.93	244.45	322.14	365.73
6.5	95.23	104.84	111.68	118.90	127.07	139.71	207.35	255.40	340.76	387.13
7	98.04	107.94	115.09	122.65	130.82	143.84	215.77	266.35	359.38	408.53
7.5	100.85	111.04	118.50	126.40	134.57	147.97	224.19	277.30	378.00	429.93
8	103.66	114.14	121.91	130.15	138.32	152.10	232.61	288.25	396.62	451.33
8.5	106.47	117.24	125.32	133.90	142.07	156.23	241.03	299.20	415.24	472.73
9	109.28	120.34	128.73	137.65	145.82	160.36	249.45	310.15	433.86	494.13
9.5	112.09	123.44	132.14	141.40	149.57	164.49	257.87	321.10	452.48	515.53
10	114.90	126.54	135.55	145.15	153.32	168.62	266.29	332.05	471.10	536.93
11	121.32	133.90	143.81	154.13	162.80	179.82	287.79	357.83	503.34	574.03
12	127.74	141.26	152.07	163.11	172.28	191.02	309.29	383.61	535.58	611.13
13	134.16	148.62	160.33	172.09	181.76	202.22	330.79	409.39	567.82	648.23
14	140.58	155.98	168.59	181.07	191.24	213.42	352.29	435.17	600.06	685.33
15	147.00	163.34	176.85	190.05	200.72	224.62	373.79	460.95	632.30	722.43
16	153.42	170.70	185.11	199.03	210.20	235.82	395.29	486.73	664.54	759.53
17	159.84	178.06	193.37	208.01	219.68	247.02	416.79	512.51	696.78	796.63
18	166.26	185.42	201.63	216.99	229.16	258.22	438.29	538.29	729.02	833.73

Continues overleaf

# ZONES AND RATES

[Calculate the Price of Your Shipment](#)
[Optional Services](#)
[Surcharges](#)
[Customs Services](#)
[Service Capability and Rating Zones](#)
[Export Services](#)
[Import Services](#)
[Domestic Services](#)

## Import rates by zone and product

### ➔ DHL EXPRESS WORLDWIDE IMPORT

Weight in kg	Zone 1	Zone 2	Zone 3	Zone 4	Zone 5	Zone 6	Zone 7	Zone 8	Zone 9	Zone 10
19	172.68	192.78	209.89	225.97	238.64	269.42	459.79	564.07	761.26	870.83
20	179.10	200.14	218.15	234.95	248.12	280.62	481.29	589.85	793.50	907.93
21	186.46	208.60	227.41	245.19	259.02	293.50	506.03	616.55	826.88	946.31
22	193.82	217.06	236.67	255.43	269.92	306.38	530.77	643.25	860.26	984.69
23	201.18	225.52	245.93	265.67	280.82	319.26	555.51	669.95	893.64	1,023.07
24	208.54	233.98	255.19	275.91	291.72	332.14	580.25	696.65	927.02	1,061.45
25	215.90	242.44	264.45	286.15	302.62	345.02	604.99	723.35	960.40	1,099.83
26	223.26	250.90	273.71	296.39	313.52	357.90	629.73	750.05	993.78	1,138.21
27	230.62	259.36	282.97	306.63	324.42	370.78	654.47	776.75	1,027.16	1,176.59
28	237.98	267.82	292.23	316.87	335.32	383.66	679.21	803.45	1,060.54	1,214.97
29	245.34	276.28	301.49	327.11	346.22	396.54	703.95	830.15	1,093.92	1,253.35
30	252.70	284.74	310.75	337.35	357.12	409.42	728.69	856.85	1,127.30	1,291.73
40	335.30	382.24	414.35	455.95	482.62	561.42	956.59	1,103.15	1,422.80	1,646.33
50	417.90	479.74	517.95	574.55	608.12	713.42	1,184.49	1,349.45	1,718.30	2,000.93
60	500.50	577.24	621.55	693.15	733.62	865.42	1,412.39	1,595.75	2,013.80	2,355.53
70	583.10	674.74	725.15	811.75	859.12	1,017.42	1,640.29	1,842.05	2,309.30	2,710.13
For each additional 0.5kg										
Above 10	3.21	3.68	4.13	4.49	4.74	5.60	10.75	12.89	16.12	18.55
Above 20	3.68	4.23	4.63	5.12	5.45	6.44	12.37	13.35	16.69	19.19
For each additional 1kg										
30.1 - 70.0	8.26	9.75	10.36	11.86	12.55	15.20	22.79	24.63	29.55	35.46
70.1 - 300.0	9.24	11.21	12.04	12.82	13.81	16.71	26.08	32.59	39.11	46.95
300.1 - 3,000*	10.18	12.33	13.14	14.10	15.19	18.39	28.70	37.29	44.76	53.71

**DHL Express 12:00** – Guaranteed delivery before 12:00 on the next possible working day from over 172 countries worldwide.

Add €5.00 to the DHL Express Worldwide Import prices.

**DHL Express 9:00** – Guaranteed delivery before 9:00 on the next possible working day from over 118 countries worldwide.

Add €35.00 to the DHL Express Worldwide Import prices.

Rates are rounded up to the nearest 0.5kg for shipments up to 30kg, and to the nearest 1kg thereafter. Each piece weight is rounded up to the nearest 0.5kg.

Rates are in Euro and exclude customs duties, taxes, clearance-related charges, VAT and all surcharges. DHL Express terms and conditions apply – see [dhl.de/express/gtc](https://www.dhl.de/express/gtc) for details.

\*DHL Express does not accept shipments exceeding 3,000kg, or containing pieces exceeding 1,000kg or 300cm in length, and/or not meeting DHL Express standards for packing. Refer to our Packing Guide on [dhl.de/express/packaging](https://www.dhl.de/express/packaging). These network restrictions are subject to change with 30 days' notice.

In the event any country leaves the European Union, DHL Express reserves the right to change rates or zones with 30 days' notice.

# ZONES AND RATES

Calculate the Price  
of Your Shipment

Optional  
Services

Surcharges

Customs  
Services

Service Capability  
and Rating Zones

Export  
Services

Import  
Services

Domestic  
Services

## Import rates by zone and product

### DHL ECONOMY SELECT IMPORT

Weight in kg	Zone 1	Zone 2	Zone 3	Zone 4/5/6
Documents and non-documents from 1kg				
1	50.78	55.86	61.44	79.83
2	51.54	56.67	62.39	81.04
3	52.30	57.49	63.35	82.25
4	53.06	58.31	64.31	83.46
5	53.82	59.13	65.27	84.67
6	54.58	59.95	66.23	85.88
7	55.34	60.77	67.19	87.09
8	56.10	61.59	68.15	88.30
9	56.86	62.41	69.11	89.51
10	57.62	63.23	70.07	90.72
11	60.23	66.09	73.24	94.78
12	62.84	68.95	76.41	98.84
13	65.45	71.81	79.58	102.90
14	68.06	74.67	82.75	106.96
15	70.67	77.53	85.92	111.02
16	73.28	80.39	89.09	115.08
17	75.89	83.25	92.26	119.14
18	78.50	86.11	95.43	123.20
19	81.11	88.97	98.60	127.26
20	83.72	91.83	101.77	131.32
21	88.16	96.73	107.17	138.30
22	92.60	101.63	112.57	145.28
23	97.04	106.53	117.97	152.26
24	101.48	111.43	123.37	159.24
25	105.92	116.33	128.77	166.22
26	110.36	121.23	134.17	173.20
27	114.80	126.13	139.57	180.18
28	119.24	131.03	144.97	187.16
29	123.68	135.93	150.37	194.14
30	128.12	140.83	155.77	201.12

Continues overleaf



# ZONES AND RATES

[Calculate the Price of Your Shipment](#)
[Optional Services](#)
[Surcharges](#)
[Customs Services](#)
[Service Capability and Rating Zones](#)
[Export Services](#)
[Import Services](#)
[Domestic Services](#)

## Import rates by zone and product

### ➔ DHL ECONOMY SELECT IMPORT

Weight in kg	Zone 1	Zone 2	Zone 3	Zone 4
40	169.42	186.63	205.77	265.82
50	210.72	232.43	255.77	330.52
60	252.02	278.23	305.77	395.22
70	293.32	324.03	355.77	459.92
80	331.40	365.91	401.85	519.82
90	369.48	407.79	447.93	579.72
100	407.56	449.67	494.01	639.62
For each additional 1kg				
Above 30	4.13	4.58	5.00	6.47
For each additional 5kg				
Above 70	19.04	20.94	23.04	29.95
Above 300*	21.57	23.74	26.09	33.94

Rates are rounded up to the nearest 1kg for shipments up to 70kg, and to the nearest 5kg thereafter. Each piece weight is rounded up to the nearest 1kg.

Rates are in Euro and exclude customs duties, taxes, clearance-related charges, VAT and all surcharges. DHL Express terms and conditions apply – see [dhl.de/express/gtc](https://www.dhl.de/express/gtc) for details.

\*DHL Express does not accept shipments exceeding 1,000kg, or containing pieces exceeding 1,000kg or 300cm in length, and/or not meeting DHL Express standards for packing. Refer to our Packing Guide on [dhl.de/express/packaging](https://www.dhl.de/express/packaging). These network restrictions are subject to change with 30 days' notice.

In the event any country leaves the European Union, DHL Express reserves the right to change rates or zones with 30 days' notice.

# ZONES AND RATES

[Calculate the Price of Your Shipment](#)
[Optional Services](#)
[Surcharges](#)
[Customs Services](#)
[Service Capability and Rating Zones](#)
[Export Services](#)
[Import Services](#)
[Domestic Services](#)

## DOMESTIC SERVICES

### DHL Domestic Express prices

Weight in kg up to*	
5	€27.69
10	€41.52
20	€55.36
30	€69.20
For each additional kg	+€2.07

\*Each package in a shipment is calculated according to the dimensional weight as soon as this exceeds the actual weight.

### Additional price per shipment for time-definite options

DHL Domestic Express 12:00	€5
DHL Domestic Express 10:30	€15
DHL Domestic Express 9:00	€35

All prices are in Euro and exclude VAT, fuel surcharge and any other surcharges. The current general terms and conditions of DHL Paket/Express National (AGB Paket/Express National) apply.

Optional Services	Charging method	Charge
Saturday Pickup	Per shipment	€30
Saturday Delivery	Per shipment	€10
Residential Address	Per shipment	€5
Direct Signature	Per shipment	€5
Adult Signature	Per shipment	€5
Signature Release	-	Free of charge
Change of Billing	Per invoice	€12
Shipment Insurance	By shipment value	0.5% of shipment value (minimum €5)
Extended Liability	Per shipment	€2
DHL ValuePack Service	Per shipment	€15

Surcharges	Charging method	Charge
Dangerous Goods in road transport (ADR chapter 1.1.3.4)	Per shipment	€25
Fuel Surcharge (Diesel)	Per shipment	Percentage of transportation and additional charges, as per index; <a href="https://www.dhl.de/express/surcharges">dhl.de/express/surcharges</a>
Additional Handling		
Overweight Piece	Per piece	€50
Oversize Piece	Per piece	€25
Non-Stackable Pallet	Per pallet	€135
Printed Invoice	Per invoice	€3
Address Correction	Per shipment	€11
Data Entry	Per shipment	€10
Remote Area	Per shipment, depending on shipment weight	€0.22 per kg (minimum €10)
Toll Surcharge	Per shipment, depending on shipment weight	€0.09 per kg

Find out more about our domestic services at [dhl.de/express/domestic-en](https://www.dhl.de/express/domestic-en).



# READY TO SHIP?



Get a quote



Chat with us



Find your nearest DHL Express Service Point



DHL Express Customer Service: 0228 902 435 - 10  
Technical support for online shipping tools: 0228 902 435 - 17



Become a business customer today

## DHL Express Germany GmbH

Marketing Services  
Postfach 20 12 61  
53142 Bonn  
Germany

Valid: 1st January 2024  
For public use

The information in this guide is correct as of 1st January 2024. DHL Express reserves the right to amend or modify any of the information at any time.

